

SC60 Series



When you need a dependable closer for a standard-duty application, the Falcon SC60 Series gets the job done. Designed for interior use with an aluminum storefront, the SC60 Series offers ANSI grade 1 durability backed by a ten-year warranty. Most common hole pattern in the industry for versatile use and easy retrofit.

Standard features

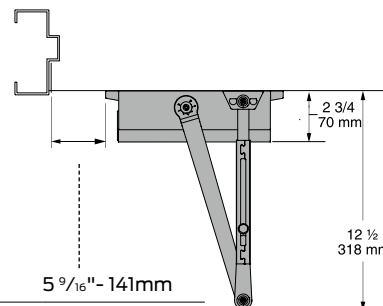
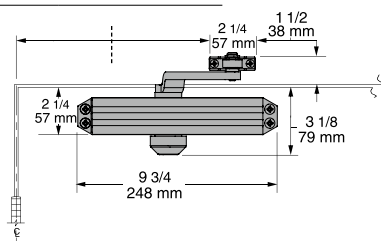
- Fully adjustable 1-5
- Retrofittable, matches Norton 1600 hole pattern
- Meets ANSI A117.1
- ANSI/BHMA A156.4, grade 1
- UL listed
- 1 3/8" diameter piston
- Closer mounts hinge side, top jamb or parallel arm when either the RW/PA or HW/PA arm is specified.
- Single piece cast aluminum body
- Staked valves
- Non-handed for left or right swinging doors
- Separate adjustable general speed, latch speed and backcheck
- Heat-treated steel piston
- Heat-treated pinion
- UL 10C approved fluid
- Universal screw pack
- 10-year warranty

Listings and certifications

The Falcon SC60 series is UL approved and compliant with the UL 10C and UBC 7-2 (1997) fire test. Additionally, the SC61 is designed to meet the American Disabilities Act (ADA) and ANSI A117.1. The SC60 Series is ANSI/BHMA A156.4, grade 1 certified.

SC60 Series hinge (pull side)

To 120°	11 13/16" - 300mm
121° to 180°	8 1/4" - 210mm



To 120°	5 9/16" - 141mm
121° to 180°	2 9/16" - 65mm

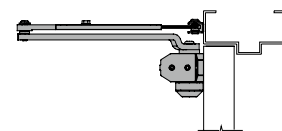
Butt hinges should not exceed 5" (127mm) in width.

Auxiliary stop is recommended at hold-open point or where a door cannot swing 180°.

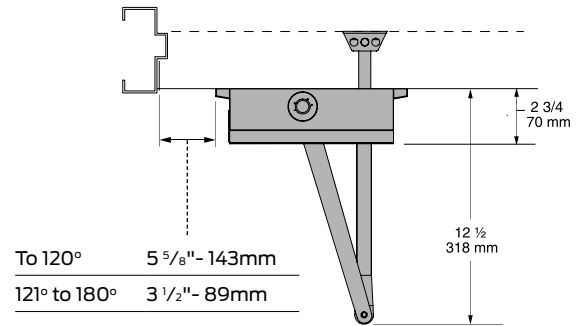
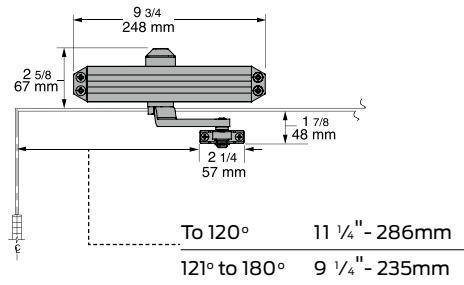
Reveal should not exceed 3/4" (19mm) for regular arm or hold-open arm.

Clearance of 2 3/4" (70mm) behind door required for 90° installation.

Delayed action add suffix "DEL" to selected cylinder (ex. SC60 DEL). Delays closing from maximum opening to approximately 70° with adjustable delay time.



SC60 Series top jamb (push side)



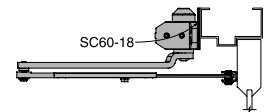
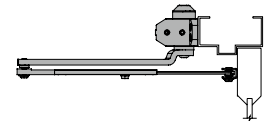
Butt hinges should not exceed 5" (127mm) in width.

Auxiliary stop is recommended at hold-open point or where a door cannot swing 180°.

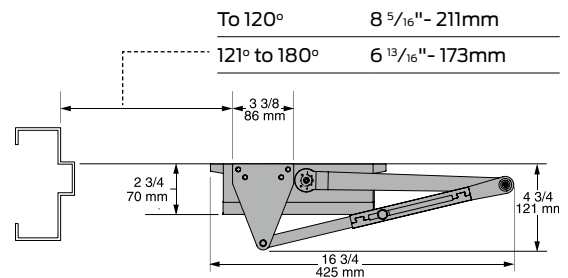
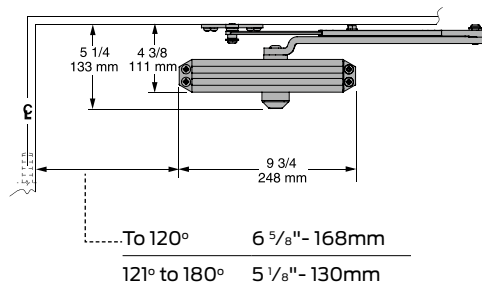
Reveal should not exceed 3 1/4" (83mm) for regular arm or hold-open arm.

Head frame less than 1 3/4" (44mm) requires plate SC60-18.

Delayed action add suffix "DEL" to selected cylinder (ex. SC60 DEL). Delays closing from maximum opening to approximately 70°, with adjustable delay time.



SC60 Series parallel (push side)

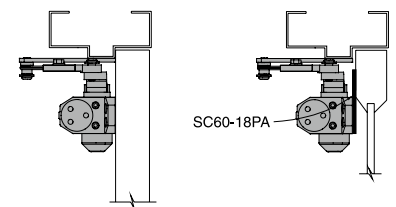


Butt hinges should not exceed 5" (127mm) in width.

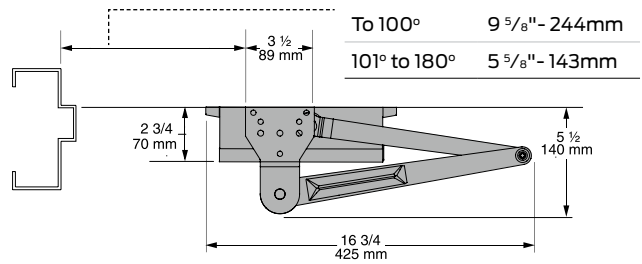
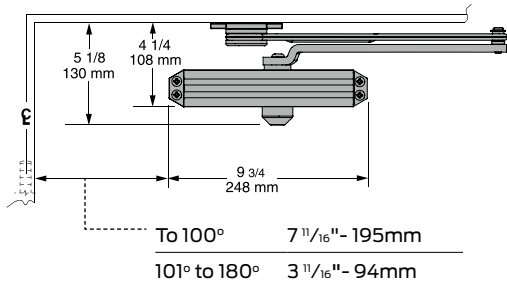
Auxiliary stop is recommended at hold-open point or where a door cannot swing 180°.

Top rail less than 4 3/8" (111mm) measured from stop requires plate SC60-18PA.

Delayed action add suffix "DEL" to selected cylinder (ex. SC60 DEL). Delays closing from maximum opening to approximately 70°, with adjustable delay time.



SC60 Series heavy duty (parallel)

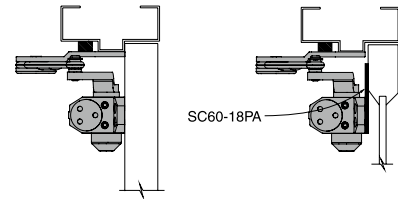


Butt hinges should not exceed 5" (127mm) in width.

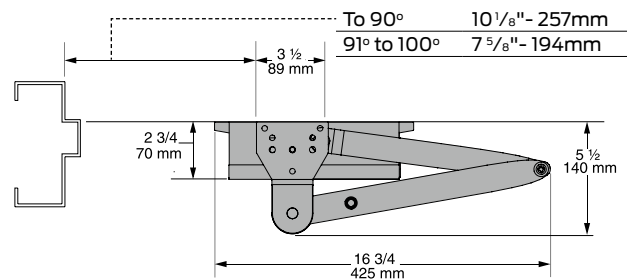
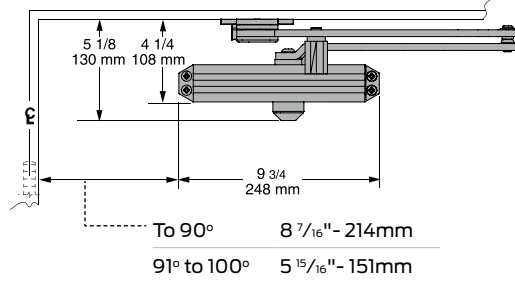
Auxiliary stop is recommended at hold-open point, where a door cannot swing 180° or where Dead stop or Spring-n-stop arm is not used.

Top Rail less than 4 1/4" (108mm) measured from stop requires plate SC60-18PA.

Delayed Action add suffix "DEL" to selected cylinder (ex. SC60 DEL). Delays closing from maximum opening to approximately 70°, with adjustable delay time.



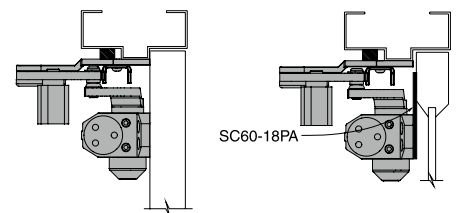
SC60 Series dead stop HO (parallel)



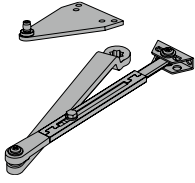
Butt hinges should not exceed 5" (127mm) in width.

Top rail less than 4 1/4" (108mm) measured from stop requires plate SC60-18PA.

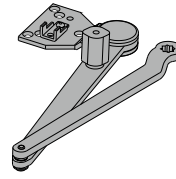
Delayed action add suffix "DEL" to selected cylinder (ex. SC60 DEL). Delays closing from maximum opening to approximately 70°, with adjustable delay time.



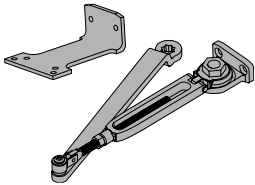
Arm types All SC60 Series closers come with standard arm and screw pack.



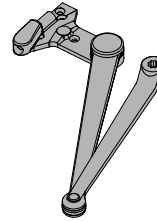
Regular arm, SC60-3077PA
Non-handed arm with adjustable forearm assembly to accommodate a range of doors and frame reveal conditions. Mounts hinge side, top jamb or parallel arm. PA shoe included to allow installation in a parallel arm configuration.



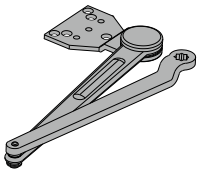
Dead stop hold-open arm, SC60-3049DS
Optional, non-handed, stamped, heavy duty, hold-open parallel arm includes a positive mechanical stop and non-adjustable forearm assembly for high volume traffic or potentially abusive installation conditions. Also includes a manually selective hold-open function.



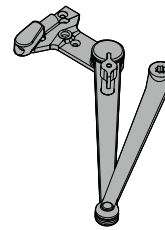
Hold-open arm, SC60-3049PA
Optional, non-handed, hold open arm with adjustable forearm assembly to accommodate a range of doors and frame reveal conditions. Mounts hinge side, top jamb or parallel arm. PA shoe included to allow installation in a parallel arm configuration.



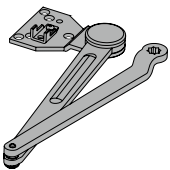
Spring-n-stop arm, SC60-3077SS
Optional, non-handed, extra heavy-duty, forged parallel arm includes an integral spring stop and non-adjustable forearm assembly for high volume traffic or potentially abusive installation conditions.



Heavy duty regular arm, SC60-3077HD
Optional, non-handed, stamped, heavy duty, parallel arm for use in high-traffic applications.



Spring-n-stop hold-open arm, SC60-3049SS
Optional, non-handed, extra heavy-duty, forged parallel arm includes an integral spring stop and non-adjustable forearm assembly for high volume traffic or potentially abusive installation conditions. Also includes a manually selective hold-open function.

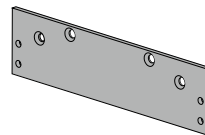


Dead stop arm, SC60-3077DS
Optional, non-handed, stamped, heavy duty, parallel arm includes a positive mechanical stop and non-adjustable forearm assembly for high volume traffic or potentially abusive installation conditions.

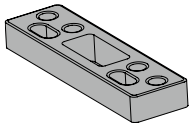
Installation accessories



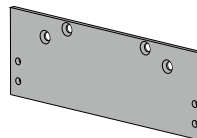
Soffit shoe support, SC60-30
Provides anchorage for fifth screw used with soffit shoe, where reveal is less than 3 1/16" (78mm).



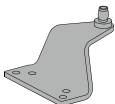
Plate, SC60-18
Required for top jamb mounting where head frame is less than 1 3/4" (44mm).



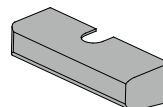
Blade stop spacer, SC60-61
Required to lower parallel arm shoe to clear 1/2" (13mm) blade stop.



Plate, SC60-18PA
Required for parallel arm mounting where top rail is less than 4 3/8" (111mm) for PA, 4 1/4" (108mm) for HD and DS, measured from the stop. Plate requires 2 3/8" (60mm) minimum top rail measured from stop.



Auxiliary shoe, SC60-62A
Requires a top rail of 7" (178mm). Optional shoe replaces PA shoe for parallel arm mounting of regular arm with overhead holder/stop.



Cover, SC60-72
Optional, non-handed, slim line plastic cover. Available on SC60 and SC61 only.