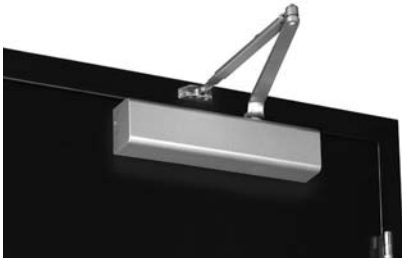


APPLICATIONS

Standard Arms



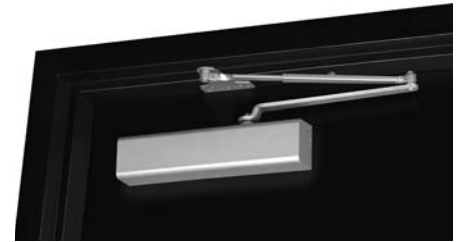
TPN arm shown (regular mounting)

- » Pull-side application
- » Closer mounted on the door



TPN arm shown (top jamb mounting)

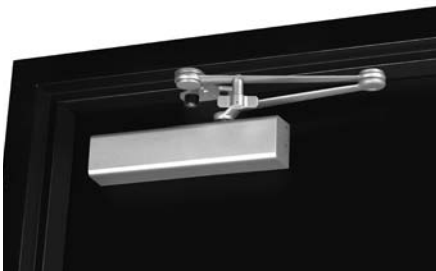
- » Push-side application
- » Closer mounted on the frame
- » Minimum top rail = 2-1/4" (57mm)
- » Maximum frame reveal = 2-3/4" (70mm)



TPN arm shown (parallel mounting)

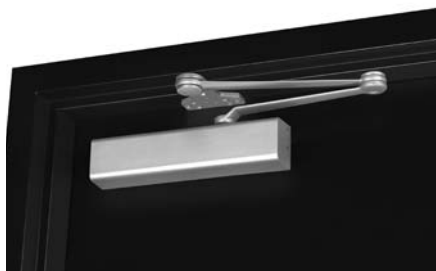
- » Push-side application
- » Closer mounted on the door

Heavy Duty Arms



HDH arm (with stop) shown

- » Push-side application
- » Stop is removable



HDN arm (without stop) shown

- » Push-side application
- » Stop is removable

NOTE: Arms are not interchangeable with Norton's premium line of closers.

ACCESSORIES

Part Number	Description
210P	Full Plastic Cover
SP210	Screw pack for TPN arm